

PRODUCT WARNING

- READ AND SAVE THESE INSTRUCTIONS.
- TO REDUCE THE RISK OF FIRE, ELECTRIC SHOCK, OR INJURY TO PERSONS, OBSERVE THE FOLLOWING:
1. Read all instructions before installing and using this product.
 2. This product is not intended for users by persons (including children) with reduced physical, sensory, or mental capabilities, or lack experience with and knowledge, unless they have been given supervision or instruction concerning use of appliance by a person responsible for their safety.
 3. Children should be supervised to ensure that they do not play with the appliance.
 4. Ensure your power source conforms to the electrical requirements of this product.
 5. Do not attempt to hardwire this product. Performing any retrofitting actions may result in personal injury and/or electrical damage, and will void this product's warranty.
 6. Be careful not to damage or cut the cords or wire insulation (covering). Do not permit wires to come in contact with any sharp edges.
 7. If the SUPPLY CORD is damaged, it must be replaced by the manufacturer, its service agent, or similarly qualified persons in order to avoid a hazard.
 8. This product must not be used or placed in potentially hazardous locations such as flammable, explosive, electrical, or chemical-laden atmospheres.
 9. Do not cover any power cords with rugs or other fabric materials.
 10. Safety precautions should be exercised during the installation and operation of this product. All service and/or repairs must be done by an authorized technician and/or electrician.
 11. Do not insert or allow fingers or foreign objects to enter any ventilation or exhaust openings as it may cause electric shock, fire, or damage to this product. Do not block or tamper with this product in any manner while it is in operation.
 12. Do not depend on the on/off programming as the sole means of shutting power from this product. Unplug the power cord before installing, servicing, or moving this product.
 13. Do not operate this product while it is damaged, or if it malfunctions, has been dropped, or is damaged in any manner.

1

PRODUCT WARNING

DO NOT attempt to repair this product yourself!

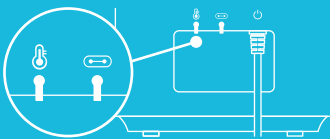
All service and/or repairs must be done by an authorized technician and/or electrician. Contact our customer service department at support@acinfinitly.com or (626) 923-6399 for product and warranty assistance.

NUMBERED ALARMS

Alarms will trigger when your dehumidifier experiences the following issues:

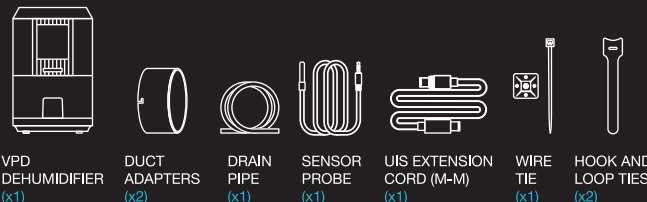
- CONDENSATION TANK MISSING**
Displays when the water tank is missing. It will pause programming and its screen will flash until it is placed back into your dehumidifier.
- FULL CONDENSATION TANK**
Displays when the condensation tank is full. Programming will pause and the screen will flash until the tank is emptied and placed back into your dehumidifier.
- NO LONGER UPRIGHT**
Displays whenever your dehumidifier falls on its side or tilts. It will pause programming and its screen will flash until it is placed back at an upright position.

WATERPROOF PORTS
Ports must be capped when not in use to keep liquid and debris out.



2

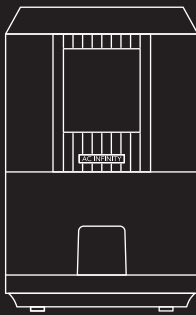
CONTENTS AND FEATURES



SMART CONTROLS
LCD monitor controls temp., humidity, and VPD triggers, plus timer, cycle, and fan modes to automate humidity balance.

PRECISION MOTOR
PWM Smart motor adjust itself 10 speed levels to maximize dehumidification based on your current environmental readings.

DUAL LOOP SYSTEM
Unique dual ports offer both open and closed loop cycles for efficient dehumidification or intake ventilation.



INTELLIGENT SENSOR
Swiss-made probe precisely measures temperature, humidity and VPD for multiple smart control options.

STABLE HUMIDITY
Maintain plant-friendly humidity at 60% and under to prevent mold and promote stable, healthy plant growth.

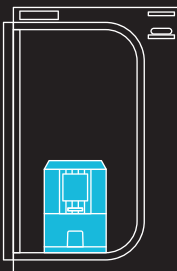
UIS™ COMPATIBLE
Connects to AI and UIS controllers for access to intelligent programming, app control and advance automation.

3

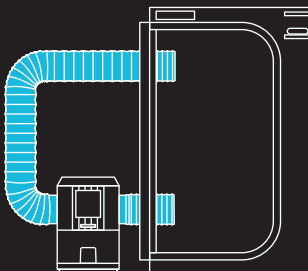
CONFIGURATION SETUP
CLOSED-LOOP SYSTEM

Closed-loop systems are ideal for max dehumidification.

INTERNAL
You may place the dehumidifier into the tent.



DUCTING (OPTIONAL)
You may use two 4 in. duct tubes (not included) placed into the tent.



4

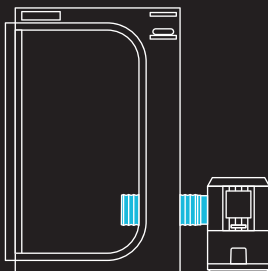
CONFIGURATION SETUP
OPEN-LOOP SYSTEM

Create an open-loop system to add intake or exhaust airflow to your tent. It is ideal for use with FAN MODE and will require 4-inch ducting (not included).

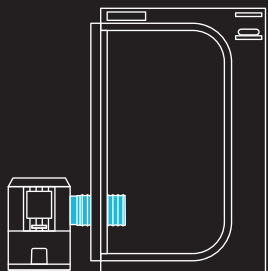
Hold the MODE and SETTING buttons to switch from DRY Mode to FAN Mode.



INTAKE
Insert the ducting from the left-hand side of your dehumidifier into your tent.



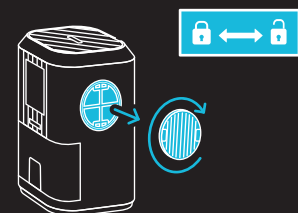
EXHAUST
Insert the ducting from the right-hand side of your dehumidifier into your tent.



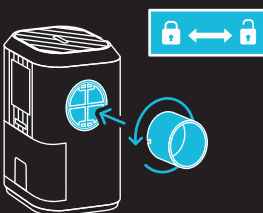
5

OPTIONAL DUCTING

STEP 1
Twist off the side vent caps to release them from the duct ports.



STEP 2
Twist the duct adapters onto the duct ports, making sure they lock into place.



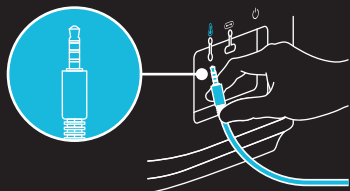
STEP 3
Attach your 4-inch ducting (not included) with duct clamps and/or duct tape.



6

POWERING AND SETUP

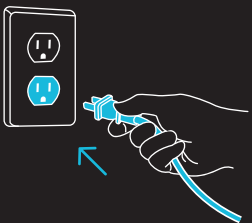
STEP 1
Plug the sensor probe into the port located at the back of your dehumidifier.



Route the probe head to your plant's canopy for the most accurate readings.

Ports must be capped when not in use to keep liquid and debris out.

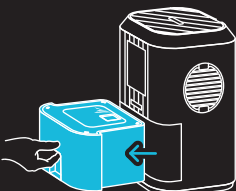
STEP 2
Plug your dehumidifier's power plug into an outlet to power it.



7

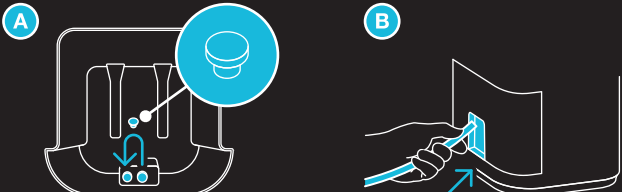
DRAINING WATER

PERIODIC
Pull the condensation tank out, remove its lid, and pour the water out.



CONSISTENT
Remove the condensation tank and its lid. Remove the drainage cap and place it in the holder to the left of the drainage hole, located at the top of the handle inside the tank. Put the lid back on and the tank back into your dehumidifier.

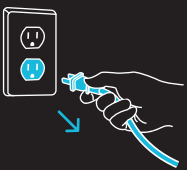
Plug the drainage hole, located underneath the tank handle, with the drain pipe and route it to a catch tray or drain.



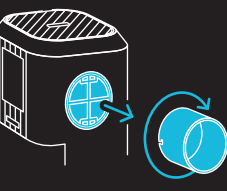
8

CLEANING

STEP 1
Set your programming to 0 in OFF Mode before unplugging it.



STEP 2
Twist the intake vent caps or duct adapters off of your dehumidifier.



STEP 3
Wipe off any dust and debris from the grille, vent caps, and adapters using a damp cloth. Set aside to dry as needed.



9

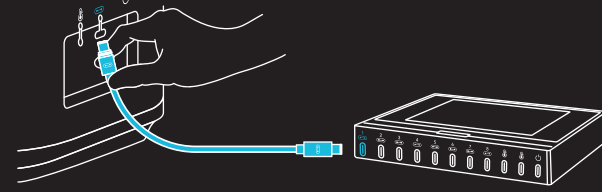
PROGRAMMING

This dehumidifier is compatible with specific controller models. Please visit our website www.acinfinitly.com for more information.

EXTENSION CABLE
Use the included UIS M-M extension cord to connect your dehumidifier to your controller (not included).

Plug the UIS connector with the gasket end into your dehumidifier. The gasket is specially designed to protect against liquids and dust.

Your controller will override all onboard settings, assume control (parameters must be adjusted on your controller), and shut off your dehumidifier's display and touch functions when connected in this manner.



CONTROLLER AI+ shown

10

MORE INFORMATION

PROGRAMMING

For in-depth programming instructions, scan this QR code to view a digital manual.



WARRANTY

Our warranty program is our commitment to you, the original customer, that product sold by AC Infinity Inc. will be free from defects for TWO YEARS from the date of purchase. If you have any issues with this product, contact us and we'll happily resolve your problem or issue a full refund!

WEBSITE | www.acinfinitly.com
EMAIL | support@acinfinitly.com
PHONE | (626) 923-6399, 9 am to 5 pm PST
ADDRESS | 21880 BAKER PARKWAY
CITY OF INDUSTRY, CA 91789

DEALERS
EMAIL | dealers@acinfinitly.com
PHONE | (626) 838-4656, 9 am to 5 pm PST

MANUAL CODE DHT2411X1

COPYRIGHT © 2025 AC INFINITY INC. ALL RIGHTS RESERVED
No part of the materials including graphics or logos available in this booklet may be copied, photocopied, reproduced, translated or reduced to any electronic medium or machine readable form, in whole or in part, without specific permission from AC Infinity Inc.

11

HYDRONE SERIES
QUICK START GUIDE

AC INFINITY