

AC INFINITY

# CLOUDFORGE

ENVIRONMENTAL HUMIDIFIER

USER MANUAL



## WELCOME

Thank you for choosing AC Infinity. We are committed to product quality and friendly customer service. If you have any questions or suggestions, please don't hesitate to [contact](#) us. Visit [www.acinfinity.com](http://www.acinfinity.com) and click contact for our contact information.

### EMAIL

[support@acinfinity.com](mailto:support@acinfinity.com)

### WEB

[www.acinfinity.com](http://www.acinfinity.com)

### LOCATION

Los Angeles, CA

## MANUAL CODE CF2212X1

### PRODUCT

CLOUDFORGE T3  
CLOUDFORGE T5  
CLOUDFORGE T7  
CLOUDFORGE T9

### MODEL

AC-CFT3  
AC-CFT5  
AC-CFT7  
AC-CFT9

### UPC-A

819137023611  
819137023635  
819137023628  
819137023642

# MANUAL INDEX

Manual Index .....	Page 5
Product Warning .....	Page 6
Key Features .....	Page 7
Product Contents .....	Page 8
Installation .....	Page 9
Powering and Setup .....	Page 15
UIS™ Platform .....	Page 19
Connecting to UIS™ Controllers .....	Page 20
Cleaning .....	Page 21
Programming .....	Page 23
Other Settings .....	Page 27
Other AC Infinity Products .....	Page 28
Warranty .....	Page 29

# PRODUCT WARNING



TO REDUCE THE RISK OF FIRE, ELECTRIC SHOCK, OR INJURY TO PERSONS, OBSERVE THE FOLLOWING:

1. Ensure your power source conforms to the electrical requirements of this product.
2. Read all instructions before installing and using this product.
3. Only use distilled water, and do not pour water into the central pipe. This will prevent your humidifier from functioning properly.
4. Do not attempt to hardwire this product. Performing any retrofitting actions may result in personal injury and/or electrical damage, and will void this product's warranty.
5. Be careful not to damage or cut the wire insulation (covering) during the installation. Do not permit wires to come in contact with any sharp edges.
6. This product must not be used or placed in potentially hazardous locations such as flammable, explosive, electrical, or chemical-laden atmospheres.
7. Do not cover any power cords with rugs or other fabric materials.
8. Safety precautions should be exercised during the installation, operation, and maintenance of this product.
9. Do not block or tamper with this product in any manner while it is in operation as it may cause electric shock, fire, or damage to this product.
10. Do not depend on the on/off programming as the sole means of shutting power from this product. Unplug the power cord before installing, servicing, or moving this product.
11. Do not operate this product while its cord is damaged, or if it malfunctions, has been dropped, or is damaged in any manner.

# KEY FEATURES

## TARGETED ZONE

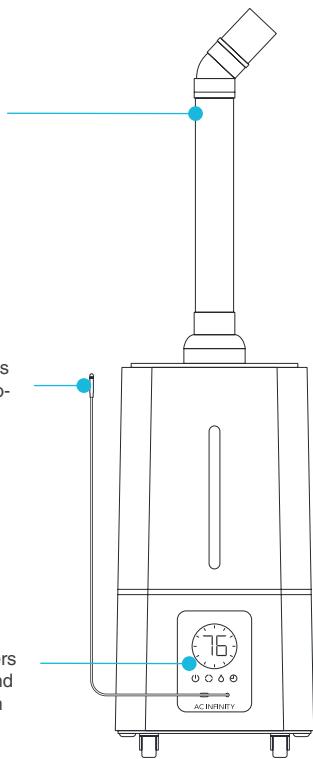
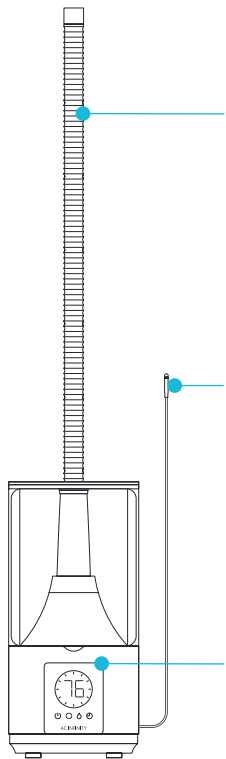
Includes a directional cap and stretchable tube, or pipe and nozzles, for various humidity distribution methods in spaces like grow tents, DIY grow rooms, living spaces, and greenhouses.

## PRECISION DETECTION

Swiss-made thermal alloy sensor made of SAE grade-316 steel detects humidity changes and provides up-to-the-minute readings. Extension cord enables detection in spot areas and convenient humidifier placement.

## SMART CONTROLLER

Onboard controller with LED touch interface featuring humidity balance programming. Pair with UIS controllers to access intelligent programming and app control with advance automation and data charts.



# PRODUCT CONTENTS

## CLOUDFORGE T3



4.5L  
HUMIDIFIER  
(x1)



FLEXIBLE  
HOSE  
(x1)

## CLOUDFORGE T7



15L  
HUMIDIFIER  
(x1)



PIPE  
BASE  
(x1)



PVC  
PIPE  
(x1)



FLEXIBLE  
HOSE  
(x1)



ELBOW  
NOZZLE  
(x1)

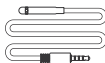


5-WAY  
NOZZLE  
(x1)

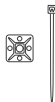


ELASTIC  
BANDS  
(x4)

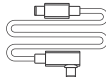
## ALL MODELS



SENSOR  
PROBE  
(x1)



PROBE  
MOUNT  
(x1)



UIS EXTENSION  
CORD (M-M)  
(x1)



NEBULIZER  
BRUSH  
(x1)



HOOK AND  
LOOP TIE  
(x1)



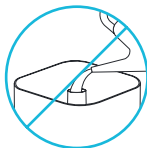
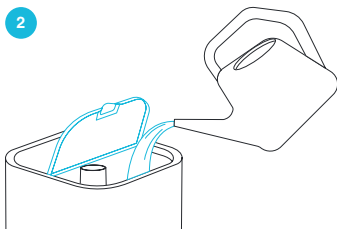
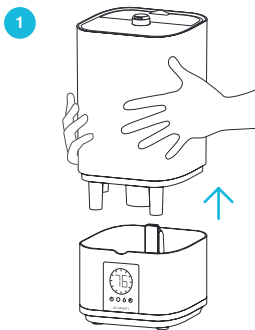
# INSTALLATION

## CLOUDFORGE T3

### STEP 1

Add water into the tank. You may detach the tank to fill it with water.

We recommend using distilled water to reduce the amount of mineral build-up.



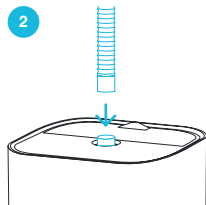
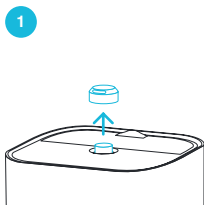
**NOTE:** Do NOT pour water into the central pipe. This will prevent your humidifier from functioning properly.

# INSTALLATION

## CLOUDFORGE T3

### STEP 2

You may swap the directional flow cap with the included flexible hose for extended targeted flow.



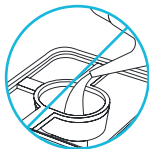
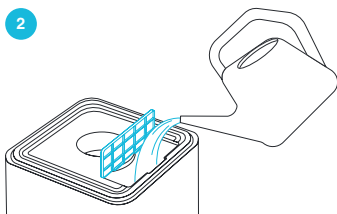
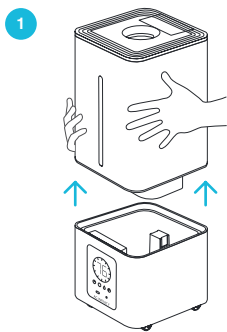
# INSTALLATION

## CLOUDFORGE T7

### STEP 1

Add water into the tank. You may detach the tank to fill it with water.

We recommend using distilled water to reduce the amount of mineral build-up.



**NOTE:** Do NOT pour water into the central pipe. This will prevent your humidifier from functioning properly.

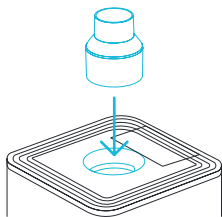
# INSTALLATION

## CLOUDFORGE T7

### STEP 2

Top the center lid opening with the included base.

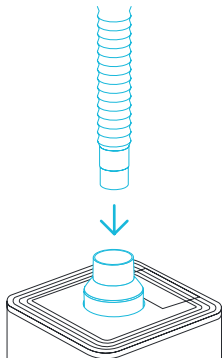
You may install either the included hose or pipe to extend the reach of your humidifier.



---

### STEP 3 — HOSE

Attach the flexible hose to the base for targeted flow.



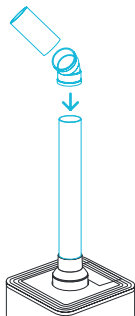
# INSTALLATION

## CLOUDFORGE T7

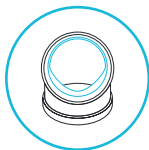
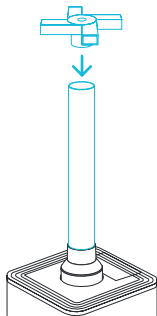
### STEP 3 — PIPES

Attach the pipe into the base, followed by your choice of nozzle:

- Elbow nozzle\* for unidirectional flow
- 5-way nozzle for omnidirectional flow



OR



\*Make sure the elbow nozzle is placed over the pipe with the interior ridge facing the ground.

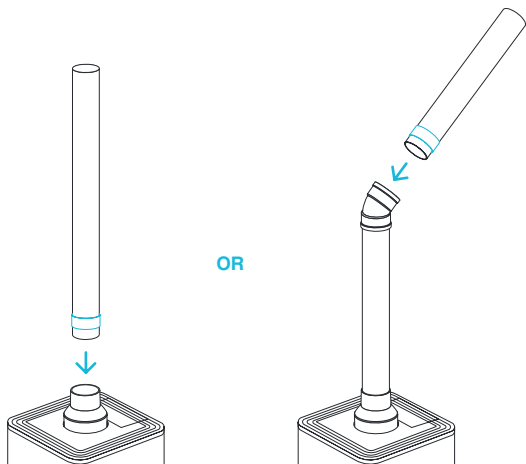
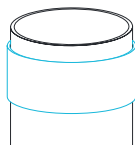
# INSTALLATION

## CLOUDFORGE T7

### STEP 4 — PIPES

You may use your own PVC pipes to extend the reach of your humidifier.

Line the pipe with the included elastic band and attach it to the base or elbow nozzle.



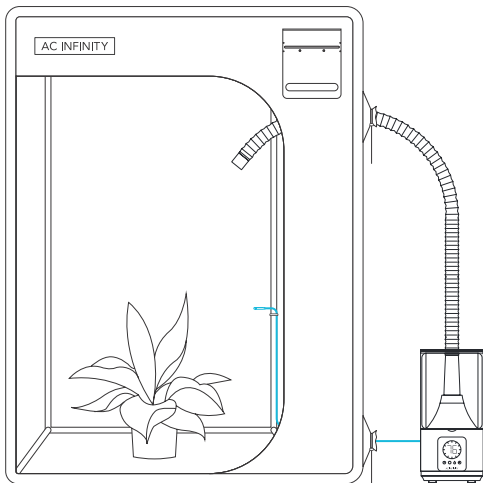
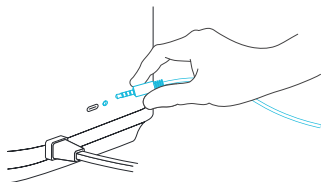
# POWERING AND SETUP

## CLOUDFORGE T3

### STEP 1

Plug the sensor probe into the 3.5mm jack located at the rear side.

Route the probe head to spot areas as needed.

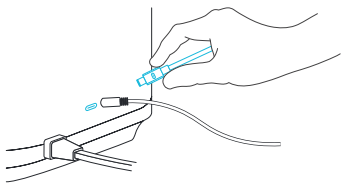


# POWERING AND SETUP

## CLOUDFORGE T3

### STEP 2

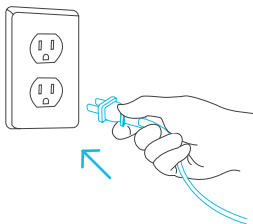
You may plug the included UIS extension cord into the rear side port to connect your humidifier to your UIS controller.



---

### STEP 3

Plug the humidifier's power plug into an outlet to power it.





# POWERING AND SETUP

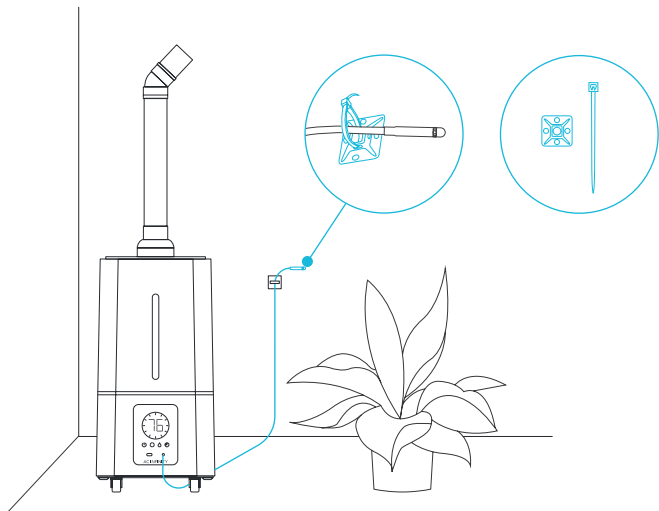
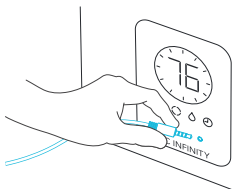
## CLOUDFORGE T7

### STEP 1

Plug the sensor probe into the 3.5mm jack located below the display screen.

Route the probe head to spot areas as needed.

You may also use the included probe mount to cable manage the corded probe.

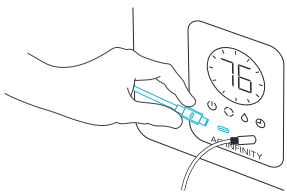


# POWERING AND SETUP

## CLOUDFORGE T7

### STEP 2

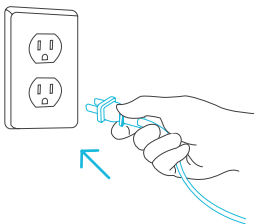
You may plug the included UIS extension cord into the front side port to connect your humidifier to your UIS controller.



---

### STEP 3

Plug the humidifier's power plug into an outlet to power it.

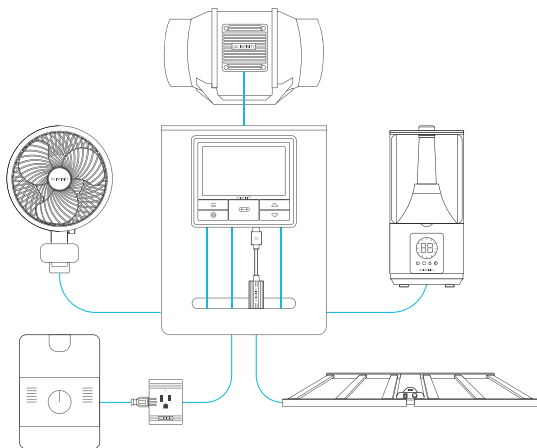


# UIS™ PLATFORM

The UIS™ platform enables you to connect a single central controller with several grow devices simultaneously. By creating this fully integrated system, you can power and program all your devices together or separately for optimized grow tent management.

Your grow system can be regulated using your controller hub or remotely on the AC Infinity app (paired with compatible controllers), where you will have access to automation programming and climate data.

You can also connect your favorite grow light and outlet device to integrate them into the UIS platform using our RJ11/12 adapter and control plug module.



**Grow devices will be sold separately and may still be in development at the time of your purchase of this product.**

# CONNECTING TO UIS™

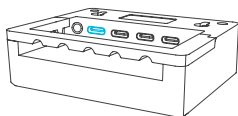
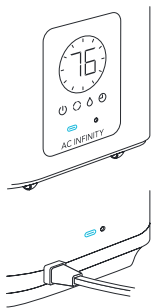
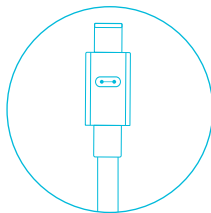


CLOUDFORGE humidifiers can connect with CONTROLLER 69 PRO (sold separately) as part of an integrated system using the included UIS extension cord.

## EXTENSION CABLE

Use the included UIS M-M extension cord to connect your humidifier to your CONTROLLER 69 PRO unit.

Your CONTROLLER 69 PRO unit will override all onboard settings, assume control (parameters must be adjusted on CONTROLLER 69 PRO), and shut off your humidifier's display and touch functions when connected in this manner. This is designed to help preserve your plant's light cycle.

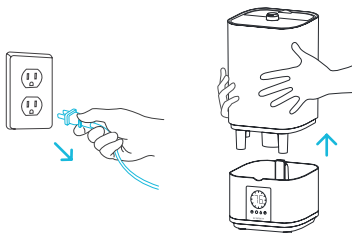


# CLEANING

Change water reservoir at least once every 4 days. Clean and maintain the unit at least once per week.

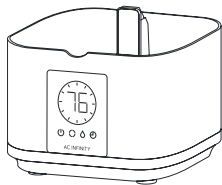
## STEP 1

Unplug your humidifier and remove the tank from the base.



## STEP 2

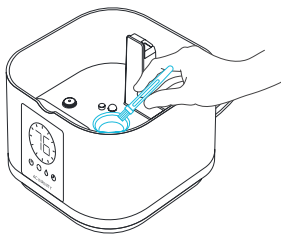
Pour out any water sitting in the base. Pour two cups of distilled water and one tablespoon of vinegar into the base. Let it sit for five minutes.



# CLEANING

## STEP 3

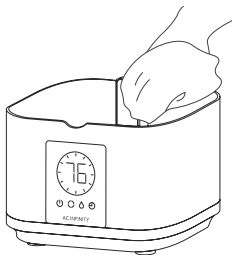
Use the included brush to remove any build-up from the nebulizer(s).



---

## STEP 4

Pour out the vinegar water mixture and wipe the base dry. Replace the tank to finish.



# PROGRAMMING



## 1. POWER BUTTON

Turns your humidifier ON or OFF.

## 2. HUMIDITY BUTTON

Cycles through the humidifier's moisture levels between 0 and 4.

## 3. AUTO BUTTON

Sets the low humidity trigger, ranging between 35 and 95% in 5% increments.

## 4. TIMER BUTTON

Sets a countdown timer to turn your humidifier off, ranging between 1 and 12 hours in 1-hour increments.

## 5. PROBE HUMIDITY

Displays the current humidity that the probe is measuring. Shows "--" if no probe is plugged in.

## 6. TIMER

Displays the TIMER mode countdown with hour mark intervals to show when your humidifier will turn off.

## 7. CURRENT LEVEL

Displays the humidifier's current moisture level.

## 8. ALERT ICONS

Displays alerts and statuses of the onboard controller, including the controller lock and AUTO HUMIDITY alert.

# PROGRAMMING

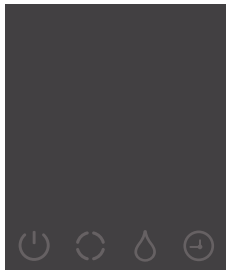
## HUMIDIFIER MODES

Tap one of the following buttons on the controller to access that button's programming mode: POWER, VAPOR, AUTO (low humidity trigger), and TIMER (to OFF).

### POWER MODE

Turns your humidifier ON or OFF. The LCD screen will not display while it is off.

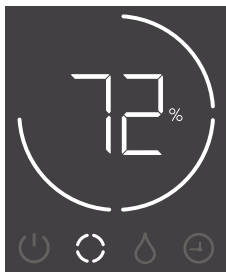
You must power your humidifier on before adjusting settings in other modes.



---

### VAPOR MODE

Your humidifier will actively run at the level set here, regardless of the probe's reading. The VAPOR mode also serves as the level the other modes will run in. Don't set the level to zero or the device will turn off when it's triggered ON.





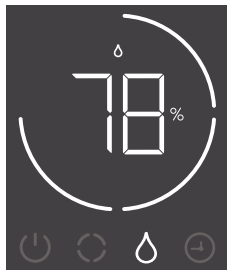
# PROGRAMMING

## AUTO MODE (LOW HUMIDITY TRIGGER)

Tapping the auto button sets the low humidity trigger. Your humidifier will activate if the probe's reading falls below this threshold.

Once triggered, your humidifier will ramp up to the level set in VAPOR mode. If the probe's reading rises above this trigger point, the humidifier will stop emitting vapors.

Leaving the AUTO mode while it is active will pause it until you return to this mode.



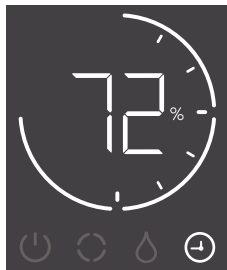
---

## TIMER MODE (TO OFF)

Tapping the timer button sets a countdown time. Your humidifier will run at the level set in VAPOR mode until the countdown ends.

The countdown will begin if no buttons are tapped for 3 seconds. The time left on the countdown is displayed as a dial inside of the current moisture level.

Leaving the TIMER mode while the countdown is running will pause it until you return to this mode.



# PROGRAMMING

## ALERT ICONS

The alert icons are displayed above the humidity reading. Icons may flash when the controller signals an alert to notify you of any triggered functions.



### WATER LEVEL LOW

Displays when the tank's water level is low. Your humidifier's power, vapor, auto, and timer buttons will flash and will pause programming until the tank is replenished.



### AUTO MODE ALERT

Flashes whenever the AUTO mode trigger activates your humidifier.



### DISPLAY LOCK ALERT

Displays when you lock the controller. The icon will flash and beep if you attempt to adjust your humidifier while it is still locked.

# OTHER SETTINGS

## FACTORY RESET

Holding the auto and timer buttons together for 3 seconds will reset your humidifier and restore factory settings. This clears all user parameters in each mode.

---

**HOLD +**  

## CONTROLLER LOCK

Holding the power button will lock the humidifier in your current mode. While your humidifier is locked, no parameters may be adjusted, nor will you be able to switch modes. Holding the power button again will unlock the humidifier.

---

**HOLD +** 

## HIDE SCREEN

Lock your humidifier so no settings can be adjusted. See above. Then tap the power button to turn the display off. Tapping it again will turn the display back on. Programs will still run in the background while the LCD screen is off.

---

**PRESS +** 

## RESET TO OFF/DEFAULT

Holding the vapor, auto, or timer button for 3 seconds will reset the value of your current mode to Default. Pressing either the vapor, auto, or timer button will return to the previous value.

**HOLD +** 

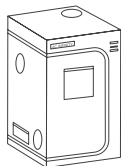
**HOLD +** 

**HOLD +** 

# AC INFINITY PRODUCTS

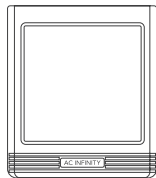
## Advance Grow Tents

The CLOUDLAB series is a line of grow tents designed to create ideal growing conditions and facilitate indoor plant cultivation year-round. Features 2000D thick oxford canvas lined with inner diamond-patterned mylar that maximizes grow light luminosity, and a reinforced frame with 150 lb. weight capacity. Includes a mounting plate to install your AC Infinity controller onto.



## Thermo-Hygrometers

The CLOUDCOM series is a line of smart thermo-hygrometers designed to accurately detect and measure your space's temperature and relative humidity. Features a bright backlit screen and desktop, wall, or magnetic mounting options to place and display anywhere. Select models include a corded, Swiss-made sensor probe by Sensirion AG for spot detection.



## CONTROLLER 69 PRO

The CONTROLLER 69 PRO is the centerpiece of the UIS platform, able to connect with our smart devices including fans and LED grow lights to create the optimal growing environment. Connects with up to four devices to provide independent programming while capable of dynamically adjusting fan speed and brightness intensity levels in response to temperature, humidity, and VPD levels.



Discover the latest innovations in environmental controls at [acinfinity.com](https://www.acinfinity.com)

# WARRANTY

This warranty program is our commitment to you, the product sold by AC Infinity will be free from defects in manufacturing for a period of two years from the date of purchase. If a product is found to have a defect in material or workmanship, we will take the appropriate actions defined in this warranty to resolve any issues.

The warranty program applies to any order, purchase, receipt, or use of any products sold by AC Infinity or our authorized dealerships. The program covers products that have become defective, malfunctioned, or expressively if the product becomes unusable. The warranty program goes into effect on the date of purchase. The program will expire two years from the date of purchase. If your product becomes defective during that period, AC Infinity will replace your product with a new one or issue you a full refund.

The warranty program does not cover abuse or misuse. This includes physical damage, submersion of the product in water, incorrect Installation such as wrong voltage input, and misuse for any reason other than intended purposes. AC Infinity is not responsible for consequential loss or incidental damages of any nature caused by the product. We will not warrant damage from normal wear such as scratches and dings.

Contact our dealers department at [dealers@acinfinity.com](mailto:dealers@acinfinity.com) or (626) 838-4656 for more information about our dealers and distributors program. Contact our customer service department at [support@acinfinity.com](mailto:support@acinfinity.com) or 626-923-6399 for product and warranty assistance. Our business hours are Monday through Friday, 9:00 am to 5:00 pm PST.



**If you have any issues with this product, contact us and we'll happily resolve your problem or issue a full refund!**

**COPYRIGHT © 2023 AC INFINITY INC. ALL RIGHTS RESERVED**

No part of the materials including graphics or logos available in this booklet may be copied, photocopied, reproduced, translated or reduced to any electronic medium or machine readable form, in whole or in part, without specific permission from AC Infinity Inc.



[www.acinfinity.com](http://www.acinfinity.com)